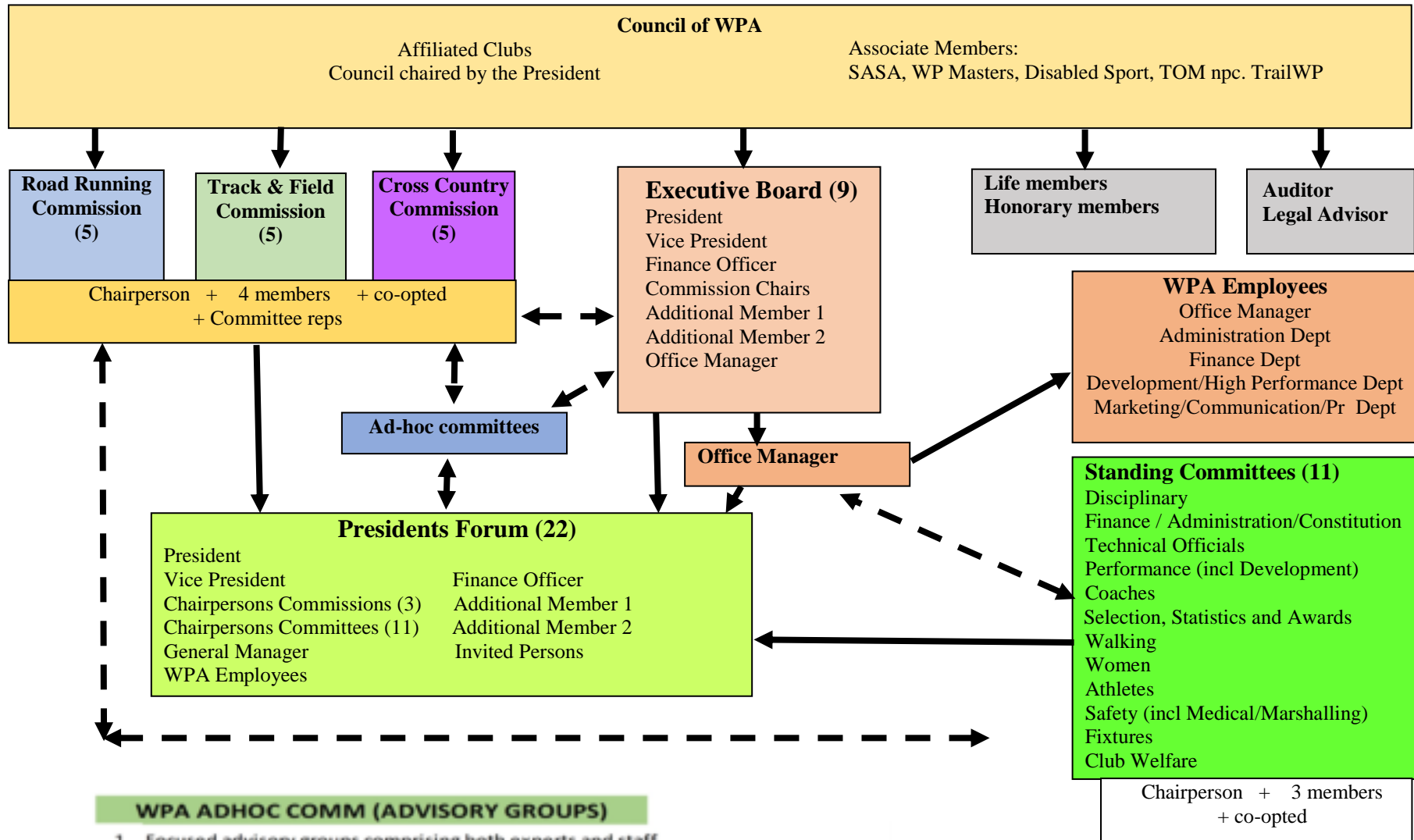




STRUCTURE OF WP ATHLETICS



WPA ADHOC COMM (ADVISORY GROUPS)

- 1 Focused advisory groups comprising both experts and staff
- 2 Established to help drive priority areas of work
- 3 Chaired by a board member and administered by a staff member

PERFORMANCE		PARTICIPATION		COMMERCIAL/MARKETING	
1	Advising / Analysing Selection criteria	1	Monitoring all events	1	Advising on a commercial strategy
2	High Performance Analysis	2	Advising on increasing	2	Advising on funding strategies
3	Monitoring Development	3	Analysing global trends	3	Advising on Marketing strategies
4	Evaluate WPA Team success	4	Advising on retaining relevance		

Council of WPA

- To meet 3 times per year (March, Sept (AGM) and Nov)

Executive WPA Board

- Reduce to 9 elected members (President, Vice President, Finance, Commission Chairs, Additional Members 1 and 2)
- Elect for a 4-year term (to coincide with the ASA elections)
- Meets as often as required

WPA Commissions

- Reduce to Chairperson plus 4 members. Quorum of 3
- Can adopt additional members but do not count for quorum
- Commission members (excl. Chairperson) to be elected for a 2-year term (to coincide with the Board elections)
- Meet at least every 2nd month (Feb, April, June, Aug, Oct, Nov)

Race Walking

- Change to a Standing Committee

Standing Committees

- Chairperson appointed by the Board (except Technical Officials who elect their own chairperson as current.)
- Coaches committee to change to a chairperson appointed by the Board
- Chairperson then recruits at least three permanent members – to be approved by the Board (considering skills, demographics). Quorum of 2
- Appoint for a 2-year term (to coincide with the Board elections)
- Meet as a committee as often as required but at least 4 times per year
- Representatives from the Standing Committees attend Commission meetings as required to address matters
- Contribute content to Presidents Forum for matters of common interest
- Committees report to the General Manager (in the form of minutes)
- New committee proposed for Safety which will include all aspects of Medical and Marshalling
- Single Selection Committee proposed to better monitor athlete workload.
- Awards merged with Selection and Statistics as they are best placed to review performance
- Performance Committee includes both High Level Performance as well as grass-roots development
 - Disciplinary
 - Technical Officials
 - Coaches
 - Walking
 - Athletes
 - Club Welfare
 - Fixtures
 - Finance / Administration
 - Performance (incl Development)
 - Selection, Statistics and Awards
 - Women
 - Safety (incl Medical)

Presidents Forum

- Advisory Forum to the Board
- New level to improve communication, cooperation and action
- Brings together the Board and chairpersons of Commissions and Committees
- Chaired by President or Vice President
- Meets at least 4 times per year (Feb, May, Aug, Oct)
- Must have an Agenda and keep minutes
- Any decision taken is subject to ratification at the next Executive Board meeting.

Election

- Board and Commission members cannot be appointed members of Committees (but can participate ex-officio)
- Any individual person cannot be on more than 2 Committees
- Chairpersons and members of Committees must have relevant skills
- Board, Commissions and Committees must meet demographic targets eg gender and race. TBA ?
- President of Board and Chairpersons of Commission and Committees cannot serve more than 2 consecutive terms
- Still call for nominations for individuals to serve on Committees. Purely an expression of interest with no obligation to appoint.
- Any vacancy on Board or Commissions to be filled by temporary co-option and then election at the next AGM

Adhoc Committees

- Appointed by the Board who will determine scope and life of committee
- Advisory bodies